

The provider of high-quality analog sounds



IKEDA Sound Labs.

Made in Japan

IT-407SS

**IKEDA's all-stainless steel tonearm,
created by an insatiable passion for musics.**



The IKEDA IT-407SS fully made by stainless-steel is a newly innovative 12 inch tonearm inspired by the technical assets of IKEDA Sound Labs.

All the outer parts and components are crafted and finished entirely in stainless steel, while the internal rotating parts are precisely engineered from brass and fitted with high-quality bearings.

Inside the stainless steel pipe, a hybrid structure combining aluminum and brass is employed to achieve both strength and refined tonal balance.

Each contact point is meticulously treated with bright rhodium plating, and the internal wiring features a hybrid strand of 6N and 4N copper conductors.

These technologies and components brought the best results for delivering a remarkable stability and the low frequency renage along with an exquisite clarity and accuracy.

The tonearm is equipped with the IKEDA IT-VTA-06 arm base as a standard accessory, allowing precise height adjustment even during playback.

Specifications:

- Overall length: 388mm
- Effective length: 307mm
- Overhang: 12mm±2mm
- Tracking error: +2° to -0°35'
- Weight 1.48kg
- Stylus force range: 0g – 5g (0.5step)
- Arm height adjustment range: 25mm – 60mm
- Cartridge/headshell balance range: 6g – 43g

IT-345CR1 and IT-407CR1

The signature of IKEDA Dynamic balanced tonearms



IT-345CR1



IT-407CR1

The major components are crafted using hybrid construction technologies, with the central head block precisely shaped into a smooth spherical form to minimize external vibrations and achieve the purest sound performance.

After each part is carefully buffed to perfection, a chrome-plated finish is applied through a process that embodies IKEDA Sound Labs. founding philosophy in its most refined form.

Every IKEDA tonearm is designed to unlock the full sonic potential of any cartridge, revealing musics with depth, clarity, and vitality.

A specially commissioned gold-finished version is also available upon request.

IT-345CR1

- Overall length: 326mm
- Effective length: 245mm
- Overhang: 15mm \pm 2mm
- Tracking error: +2° to -1°21'
- Weight 1.25kg
- Stylus force range: 0g – 5g (0.5step)
- Arm height adjustment range: 25mm – 60mm
- Cartridge/headshell balance range: 6g – 41.5g

IT-407CR1

- Overall length: 388mm
- Effective length: 307mm
- Overhang: 12mm \pm 2mm
- Tracking error: +2° to -0°35'
- Weight 1.48kg
- Stylus force range: 0g – 5g (0.5step)
- Arm height adjustment range: 25mm – 60mm
- Cartridge/headshell balance range: 6g – 41.5g

Akiko

**Celebrating 10 years of the new generation of IKEDA
where craftsmanship and passion bring music to life**



Akiko is the first cartridge in the IKEDA line-up to feature a diamond cantilever. Its micro-ridge stylus precisely traces every groove, enhancing sonic definition, spatial clarity and speed.

The base and body are crafted from titanium alloy individually machined from solid blocks, and then finely polished and finished in an elegant pink gold through ion plating.

The yoke base is made from a specially developed anti-vibration alloy that offers exceptional absorption of resonance and noise.

Inside, a powerful neodymium magnet drives the generator along with the inner coils made of PCOCC wire for the first time in an IKEDA cartridge so that it will deliver a sound of remarkable purity and vitality.

Specifications:

- Electromagnetic Generator: Moving Coil (MC)
- Output Voltage: 0.35 mVrms (1kHz 35.4 mm/sec. at 45° peak)
- Coil Impedance: 6.0 ohms (1kHz)
- Appropriate Stylus Force: 1.75 g – 2.0 g (*Recommended Tracking Force: 1.75 g*)
- Weight: 15 grams

9Gss

A 24K gold-plated masterpiece with the limited production of only 200 units worldwide



The internal frame, composed of the upper base and center pillar base is independently designed and precisely assembled, unlike conventional single-piece constructions.

The upper base is CNC-machined with precision from solid titanium, and then hand-polished to achieve a flawless finish.

For the center pillar base, a special anti-vibration alloy with exceptional absorption of resonance and noise is employed.

The body is plated with a 0.5 μm layer of silver as an undercoat followed by a 0.5 μm layer of 24K gold, enhancing both its appearance and musical refinement.

Thanks to these engineering advancements, the sound is brilliant, elegant, and distinct.

The stylus tip is a square-cut diamond and the magnet is made of a state-of-the-art neodymium type, and the cantilever is crafted from boron which is renowned for its outstanding transmission of vibration.

Specifications:

- Electromagnetic Generator: Moving Coil (MC)
- Output Voltage: 0.3 mVrms (1kHz 35.4 mm/sec. at 45° peak)
- Coil Impedance: 3.0 ohms (1kHz)
- Appropriate Stylus Force: 2.0 \pm 0.1 g
- Weight: 14 grams

9xx

**A new-generation flagship that embodies precision,
depth and the living breath of analog sound**



The cantilever, crafted from boron for its superior transmission of vibration is paired with a micro-ridge stylus that traces each groove with extraordinary finesse and musical sensitivity.

The base is made of titanium and the body is made from aluminum alloy — both precisely CNC-machined from solid blocks, hand-buffed, and finished with a layer of black rhodium plating, which brings forth a powerful and richly grounded bass response.

This fusion of “soft” and “hard” materials brings expressive depth and warmth by realizing a sound filled with profound weight, vitality, and energy.

Specifications:

- Electromagnetic Generator: Moving Coil (MC)
- Output Voltage: 0.3mVrms (1kHz 35.4 mm/sec. at 45° peak)
- Coil Impedance: 2.5 ohms (1kHz)
- Appropriate Stylus Force: 2.0 ± 0.2g
- Weight: 12 grams

魁 KAI

**Flagship model Engineered to
maximize sonic performance**



This flagship model employs the finest materials and components, achieving a new level of refinement beyond conventional designs.

The body is crafted from solid aluminum alloy, while the top plate that mounts the generator is precisely CNC-machined from solid titanium.

Together with a micro-ridge stylus, highly efficient Permalloy core, low-impedance coils and an ideally shaped magnet yoke incorporating a samarium-cobalt magnet, the KAI reproduces music with the highest fidelity as close as possible to the original master recording.

Specifications:

- Electromagnetic Generator: Moving Coil (MC)
- Output Voltage: 0.19mVrms (1kHz 35.4mm/sec. at 45° peak)
- Coil Impedance: 2.5 ohms (1kHz)
- Appropriate Stylus Force: 2.0 ± 0.2 g
- Weight : 11.5 grams

彩 SAI

**A headshell-integrated cartridge that unites
the vivid realism of IKEDA's heritage
with stable and precise playback**



Developed as the successor to the legendary IKEDA 9MUSA U. This moving-coil cartridge integrates the headshell and body into a single unified design.

The body combines hard natural amboyna wood with pure copper and aluminum components, while the magnetic circuit is finished in 24K gold plating for both beauty and performance.

With featuring a boron cantilever and a micro-ridge stylus, its high-output and highly efficient generator delivers the vivid and finely detailed sound that defines IKEDA.

Specifications:

- Electromagnetic Generator: Moving Coil (for universal tonearms)
- Output Voltage: 0.3mVrms (1kHz 35.4mm/sec. at 45° peak)
- Coil Impedance: 2.5 ohms (1kHz)
- Appropriate Stylus Force: 2.0 ± 0.2g
- Weight: 30 grams

9TT

**A standard model that reproduces natural
sound with no added coloration**



The body is precisely CNC-machined from solid aluminum alloy, securely housing the generator and suppressing unwanted resonance that will cloud the sound.

The cantilever features a double-layered duralumin pipe structure by minimizing weight and preventing distortion or warping that could negatively affect playback.

A line-contact stylus tip traces every groove with precision by revealing the pure musical essence captured in the vinyl record.

Specifications:

- Electromagnetic Generator: Moving Coil (MC)
- Output Voltage: 0.16mVrms (1kHz 35.4mm/sec. at 45° peak)
- Coil Impedance: 2.0 ohms (1kHz)
- Appropriate Stylus Force: 1.8 ± 0.2g
- Weight: 10 grams

9TS

An easy-to-handle, high-output entry model that delivers an energetic and captivating sound



The stylus tip features an oval profile, continuing the trusted design tradition of Ikeda cartridges.

Its dual-layered duralumin cantilever ensures strength and precision, while the body and generator mechanism share the same structure and manufacturing process as the upper models — delivering a vivid, energetic and well-balanced sound.

Specifications:

- Electromagnetic Generator: Moving Coil (MC)
- Output Voltage: 0.35mVrms (1kHz 35.4mm/sec. at 45° peak)
- Coil Impedance: 6.0 ohms (1kHz)
- Appropriate Stylus Force: 2.0 ± 0.2g
- Weight: 10 grams

9mono

**A mono model crafted for authentic
monaural vinyl listening**



This model is specially designed for enjoying monaural vinyl records on modern stereo systems.

It features independent monaural generator coils for the right and left channels and it's ensuring completely separated circuits and eliminating unwanted hum noise.

The cantilever employs a dual-layered duralumin pipe structure to achieve both lightness and rigidity, while the oval-shaped stylus tip faithfully reproduces a wide range of monaural records from any era with precision and musical depth.

Specifications:

- Electromagnetic Generator: Moving Coil (MC)
- Output Voltage: 0.22mVrms (1kHz 50mm/sec. peak)
- Coil Impedance: 2.0 ohms (1kHz)
- Appropriate Stylus Force: 1.8 ± 0.2 g
- Weight: 10 grams

IST-201

Step-up Transformer for Low-Impedance MC Cartridges



The body is precisely CNC-machined from a solid aluminum block, designed for optimal performance as a step-up transformer dedicated to low-impedance MC cartridges.

High-quality step-up transformers are essential to fully unleash the potential of low-impedance MC cartridges and the IST-201 achieves this with exceptional internal efficiency and minimal signal loss.

IST-201 delivers clarity, dynamics and musical depth. It draws out the full expressive capability of IKEDA MC cartridges as well as other brands for an ultimate analog listening experience.

Specifications:

- Frequency Response: 10 Hz – 100 kHz ± 0.6 dB (3 Ω / 47 k Ω)
- Step-Up Rate: 26 dB
- Channel Balance: within 0.1 dB (1kHz)
- Channel Separation: over 90 dB (1kHz)
- Input Impedance: 1.0 Ω – 6.0 Ω
- Load Impedance: over 47 k Ω
- Dimensions: 140 mm (W) \times 55 mm (H) \times 95 mm (D)
- Weight: 1.7 kg

IT-VTA-06

A precision VTA adjuster that allows fine height adjustment of the tonearm even during playback



The IT-VTA-06 is a precision VTA (Vertical Tracking Angle) adjuster base equipped with an integrated lifter mechanism.

Compatible with all IKEDA tonearms from the IT-345 series onward — as well as the classic Fidelity Research FR-64 and FR-66 models (with an inner shaft diameter of 25 mm). It enables smooth and precise height adjustment even during playback.

The main body is CNC-machined from solid stainless steel, while the tonearm mounting unit employs a hybrid construction of stainless steel and brass for superior stability and resonance control.

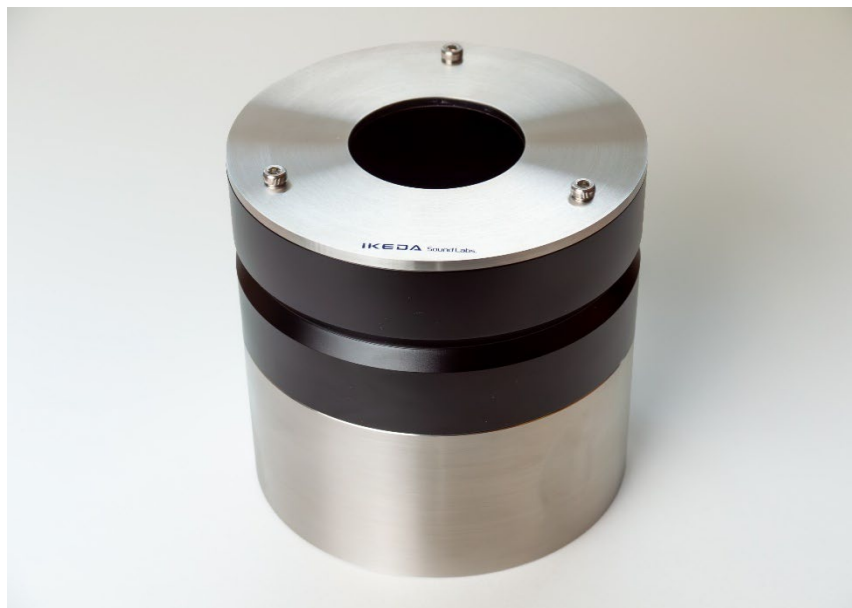
This design ensures ideal tracking geometry by maximizing the performance of any cartridge.

Specifications:

- Adjustable lifting range: 0 – 10 mm
- Required mounting hole diameter for VTA lifter shaft: 41 mm ϕ
- Diameter of VTA Lifter shaft: 40 mm
- Diameter of Washer: 56 mm

TAS-SSA

**An independent tonearm stand designed to deliver
ideal sound performance and location
free from placement limitations.**



A high-rigid construction that sandwiches aluminum between two of stainless steel plates thoroughly suppressing unwanted vibrations. Its substantial weight-driven design enhances overall stability, minimizing vibration and resonance to enable clear, tight, and well-controlled low-frequency reproduction.

The TAS-SSA is manufactured on a made-to-order basis. The base mounting hole diameter can be selected from either $\phi 31$ or $\phi 41$ for compatibility with the IKEDA IT-VTA-06. For fully custom orders, the overall height can also be specified in 1 mm increments between 90mm and about 110mm. Except the standard height of 103mm, the price will be estimated.

Specifications:

- Standard Height: 103 mm
- Base mounting hole diameter: $\phi 31$ or $\phi 41$ (selectable)
- Weight: up to 3.15 kg
- Included accessory: L-shaped hex wrench (3 mm) \times 1

The rotating platform (arm base) and the IKEDA IT-VTA-06 are not included.

Audio cables

HBC-MS-5000 series double-core shielded hi-fi audio cables



HBC-MS-5000DR

(DIN > RCA)

Tonearm straight cable – 1.2 m



HBC-MS-5000LDR

(DIN > RCA)

Tonearm right-angle cable – 1.2 m



HBC-MS-5000DXLR

(DIN > XLR Male)

Tonearm straight cable – 1.2 m



HBC-MS-5000LDXLR

(DIN > XLR Male)

Tonearm right-angle cable – 1.2 m



HBC-MS-5000RR

(RCA > RCA)

RCA cable – 1.0 m



HBC-MS-5000XLR-MF

(XLR Male ↔ XLR Female)

XLR cable – 1.0 m

It achieves superior sound transmission efficiency through a hybrid structure of high-quality 6N copper and OFC materials, ensuring pure signal integrity.

Custom lengths are available upon request.

Headshells



IS-2TB

Aluminum body with
black buffing finish

- 6N copper wires
- Weight: 17 grams



IS-2TW

Aluminum body with
white matte finish

- 6N copper wires
- Weight: 17 grams



IS-2TCR1

Aluminum body with
chrome buffing finish

- OFC Litz wires.
- Weight: 17.5 grams



IS-2TGL1

Aluminum body with
24K gold plated finish

- OFC Litz wires
- Weight: 17.5 grams



IS-2TSS

Stainless steel body
with hairline finish

- 6N copper wires
- Weight: 24 grams

All IS-series headshells in the export lineup feature titanium connectors and rhodium-plated terminals for superior conductivity and durability.

Lead Wires for Headshells



ISL-1

Overall length: 35 mm
4N copper and OFC Litz wires



ISL-2

Overall length: 35 mm
6N copper wires



ISL-3

Overall length: 35 mm
Silver wires

The terminal pins are made of phosphor bronze with a rhodium-plated surface, providing excellent conductivity and superior resistance to corrosion.

IKEDA Sound Labs.

4387, Yaho, Kunitachi-shi, Tokyo 186-0011, Japan
Phone: (+81) 42-576-2276 (Direct: (+81) 42-312-0528)
Fax: (+81) 42-574-2267
<http://www.islabs.co.jp>



Scan for more information